

Heaven and Earth Designs

SHH Now

Chart No: HAEZIN 207

By Michele Sayetta

Copyrighted Artwork Zindy S. D. Nielsen



Finished Design Size 400 W by 288 H (16 WX 11-1/2 H inches on 25ct)

Heaven and Earth Designs LLC

1373 45th Ave SW

Willmar MN 56201

320-214-7998

<http://www.heavenandearthdesigns.com>

TM/© 2008 Zindy S. D. Nielsen

<http://zindy-zone.dk/>

Instructions

The model for SHH Now is recommended to be stitched over 1 on 25 count Dublin Linen. Please use 1 strand of floss or 2 depending on your coverage preference. Charts are recommended to be stitched from page 1 top left to the last page bottom right.

It is recommended that you make working copies and enlarge to view detail and symbols.

You may also use the tent stitch or full crosses depending on your preference.

This is a large project that will offer many hours of stitching pleasure.














We thank you for purchasing this design and welcome any questions or comments that you may have.

Heaven and Earth Designs LLC

TM/© 2008 Zindy S. D. Nielsen
<http://zindy-zone.dk/>

Pattern Name: SHH Now-Nielsen
Designed By: Michele Sayetta
Company: Heaven and Earth Designs
Copyright: 2008
Fabric: Linen 25, White
 400w X 288h Stitches
Size: 25 Count, 16w X 11-1/2h in














Floss Used for Full Stitches:

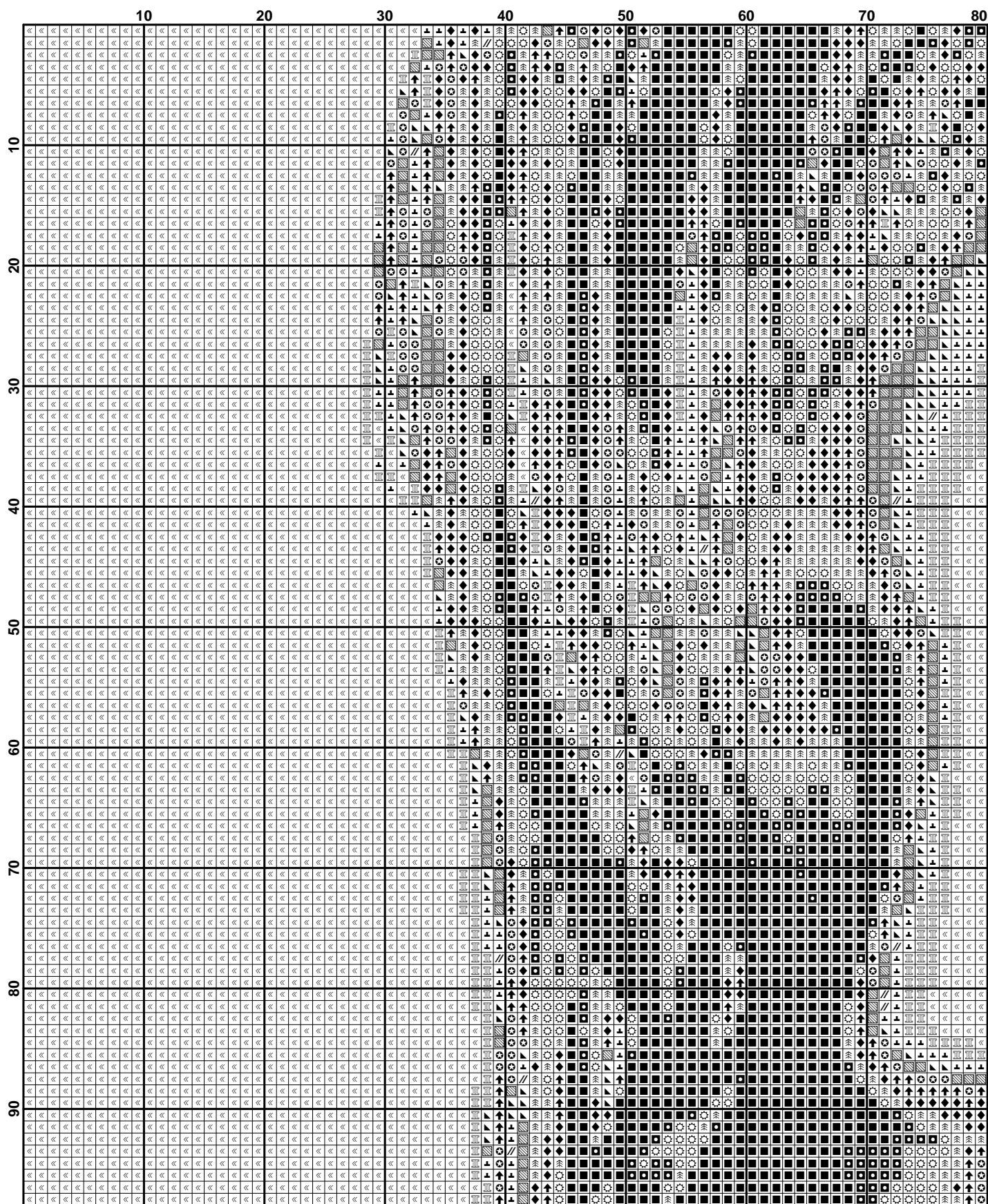
Symbol	Strands	Type	Number	Color
	2	DMC	168	Pewter-VYLT
	2	DMC	169	Pewter-LT
	2	DMC	310	Black
	2	DMC	318	Steel Gray-LT
	2	DMC	413	Pewter Gray-DK
	2	DMC	414	Steel Gray-DK
	2	DMC	453	Shell Gray-LT
	2	DMC	762	Pearl Gray-VYLT
	2	DMC	3042	Antique Violet-LT
	2	DMC	3371	Black Brown
	2	DMC	3743	Antique Violet-VYLT
	2	DMC	3799	Pewter Gray-VYDK
	2	DMC	3865	Winter White

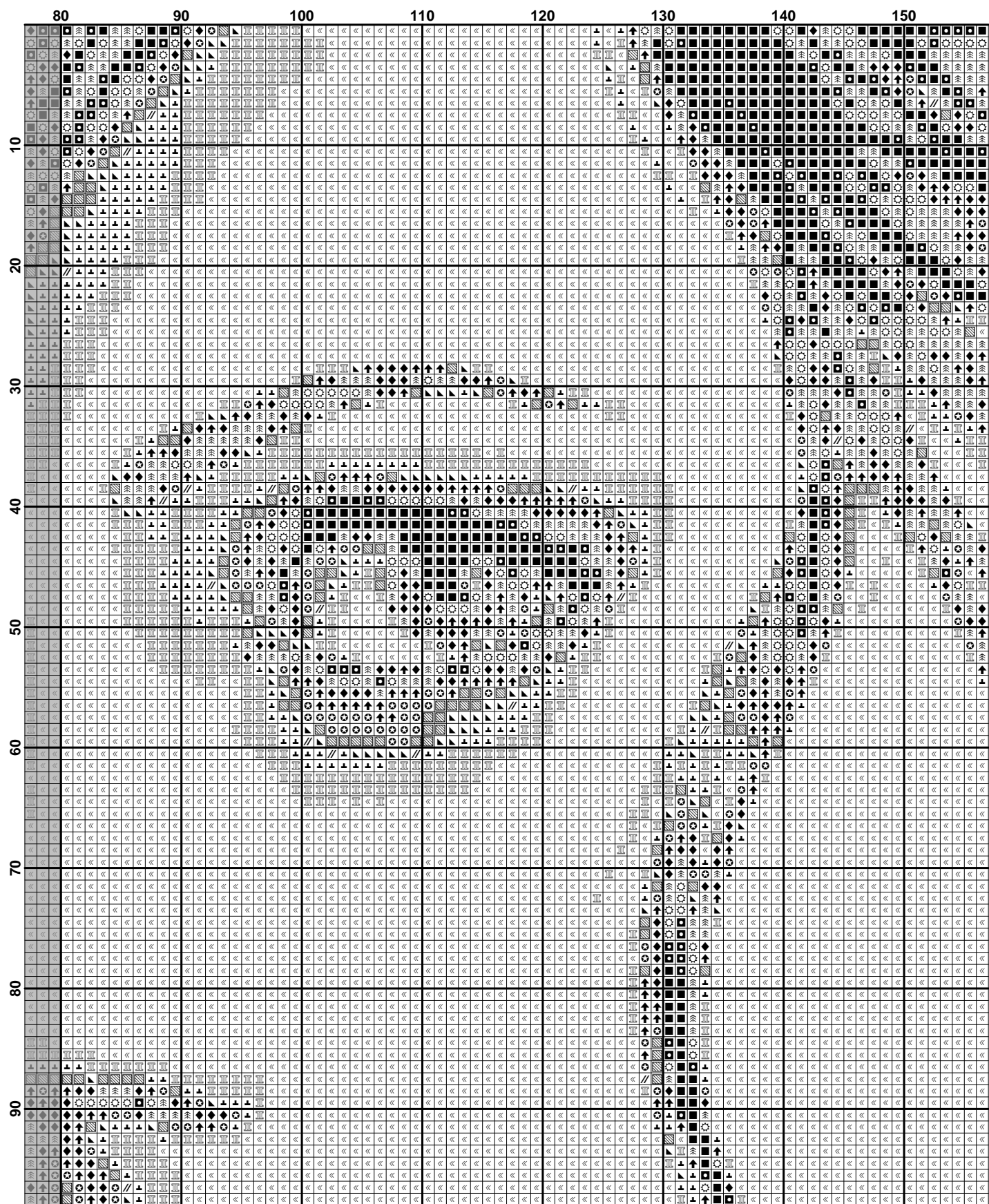
Usage Summary

Strands Per Skein: 6

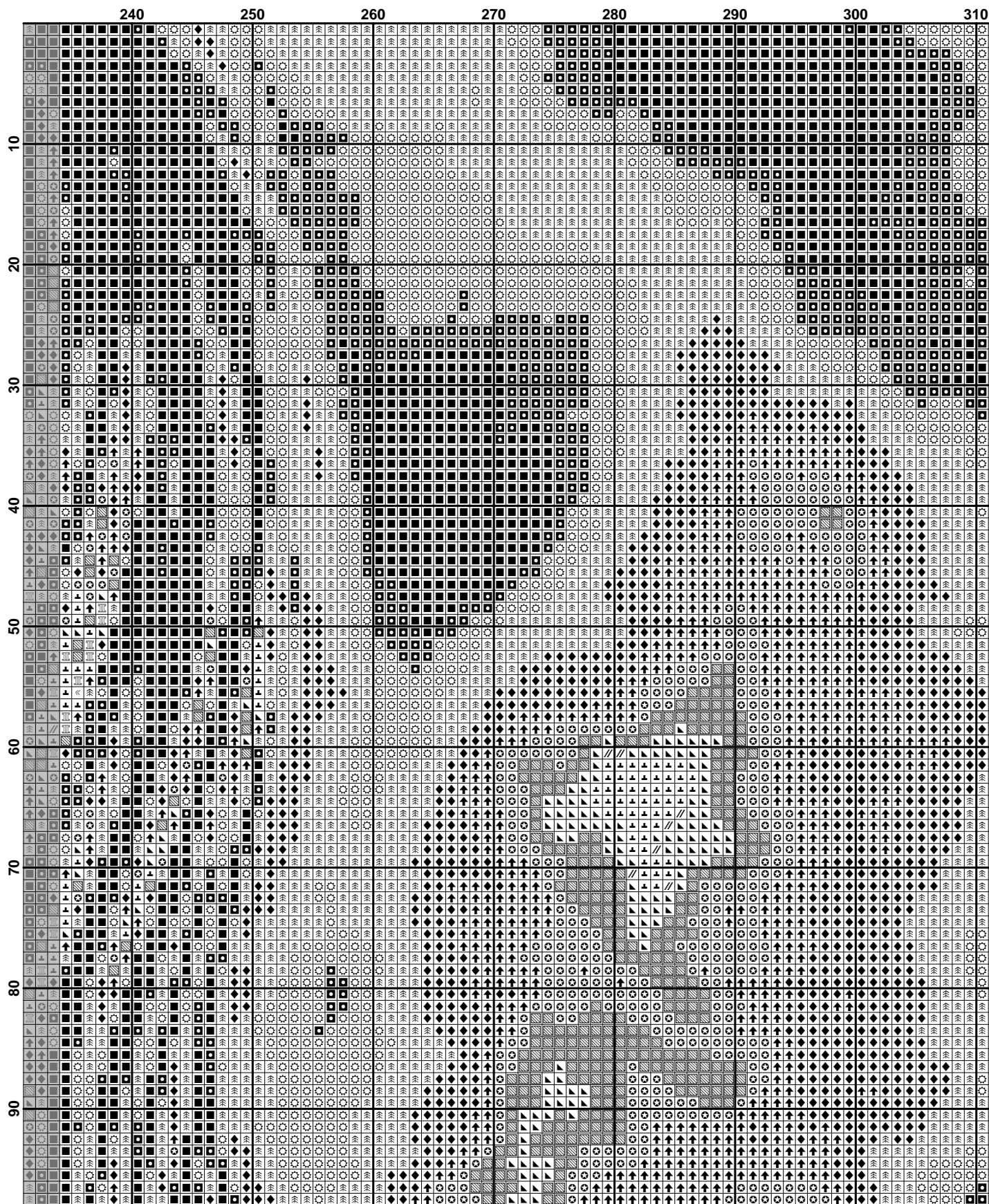
Skein Length: 313.0 in

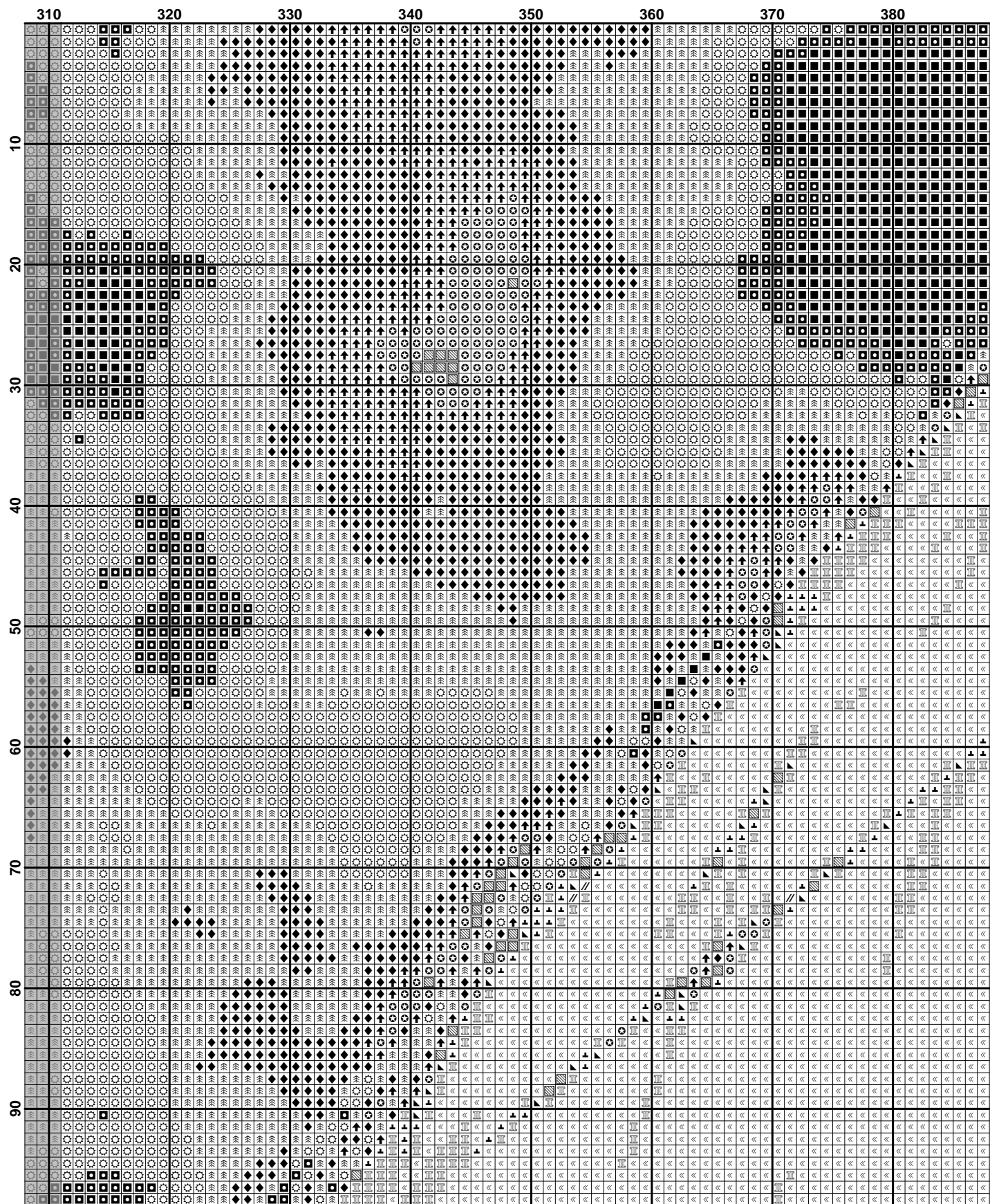
Type	Number	Full	Half	Quarter	Petite	Back(in)	Str(in)	Spec(in)	French	Bead	Skein Est.
 DMC 168	168	1748	0	0	0	0.0	0.0	0.0	0	0	1.000
 DMC 169	169	3695	0	0	0	0.0	0.0	0.0	0	0	2.000
 DMC 310	310	13958	0	0	0	0.0	0.0	0.0	0	0	4.000
 DMC 318	318	2919	0	0	0	0.0	0.0	0.0	0	0	1.000
 DMC 413	413	8415	0	0	0	0.0	0.0	0.0	0	0	3.000
 DMC 414	414	6525	0	0	0	0.0	0.0	0.0	0	0	2.000
 DMC 453	453	178	0	0	0	0.0	0.0	0.0	0	0	1.000
 DMC 762	762	5908	0	0	0	0.0	0.0	0.0	0	0	2.000
 DMC 3042	3042	2465	0	0	0	0.0	0.0	0.0	0	0	1.000
 DMC 3371	3371	4007	0	0	0	0.0	0.0	0.0	0	0	2.000
 DMC 3743	3743	3139	0	0	0	0.0	0.0	0.0	0	0	1.000
 DMC 3799	3799	7283	0	0	0	0.0	0.0	0.0	0	0	2.000
 DMC 3865	3865	54960	0	0	0	0.0	0.0	0.0	0	0	16.000

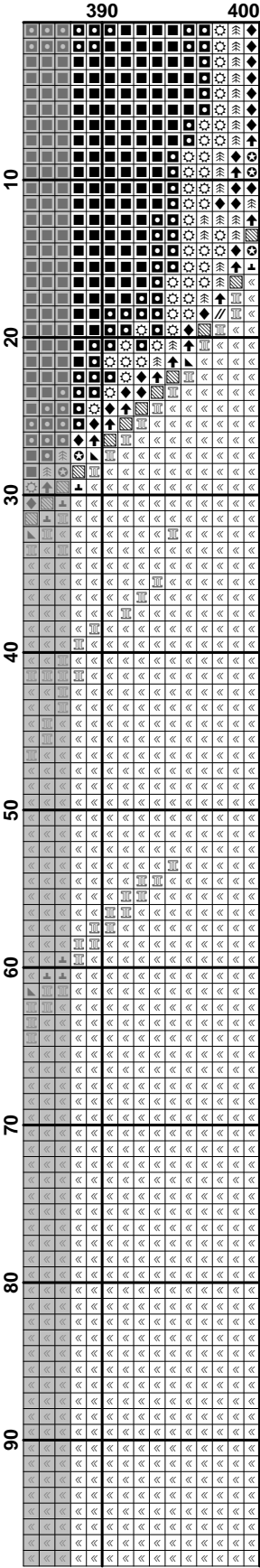


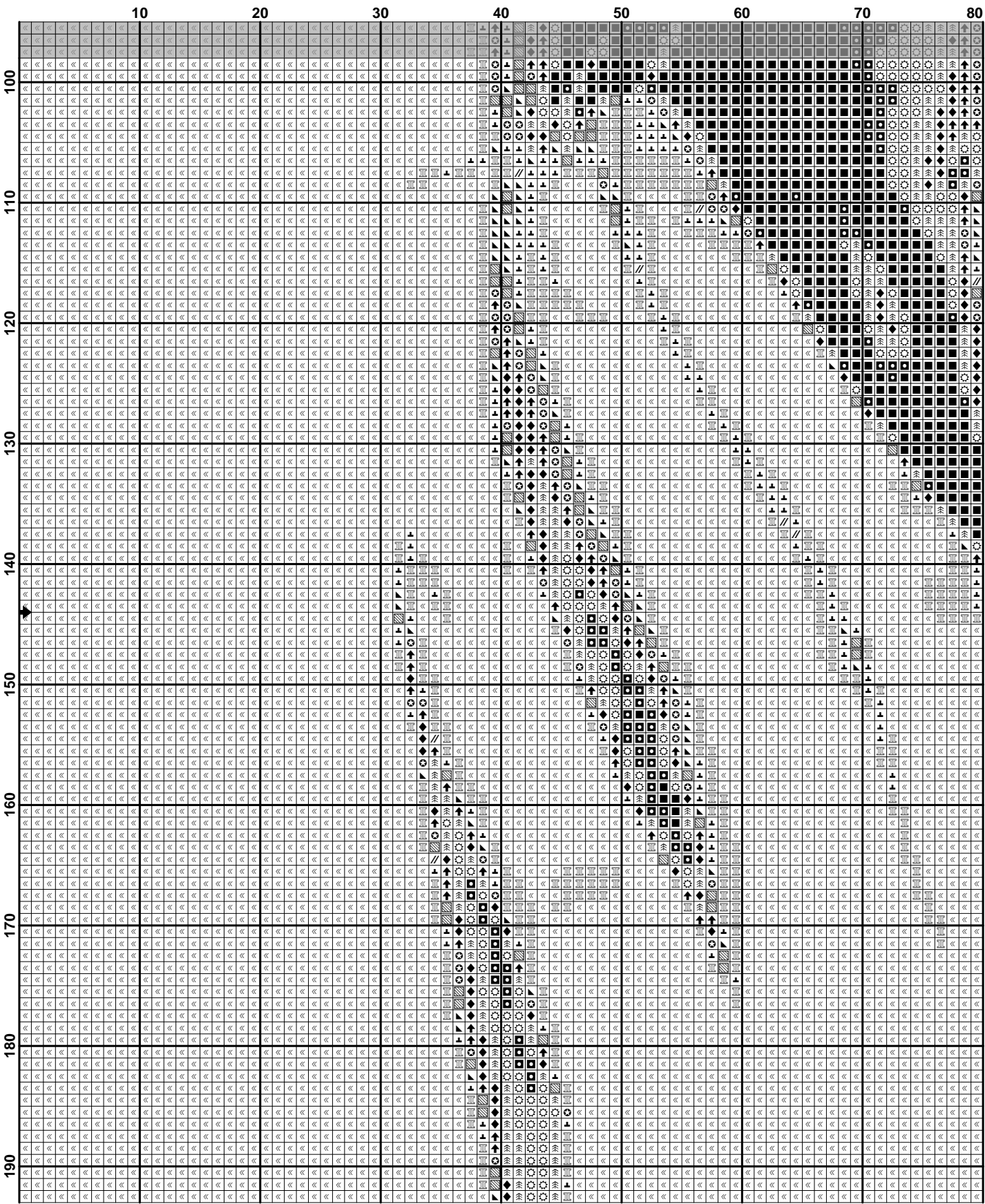


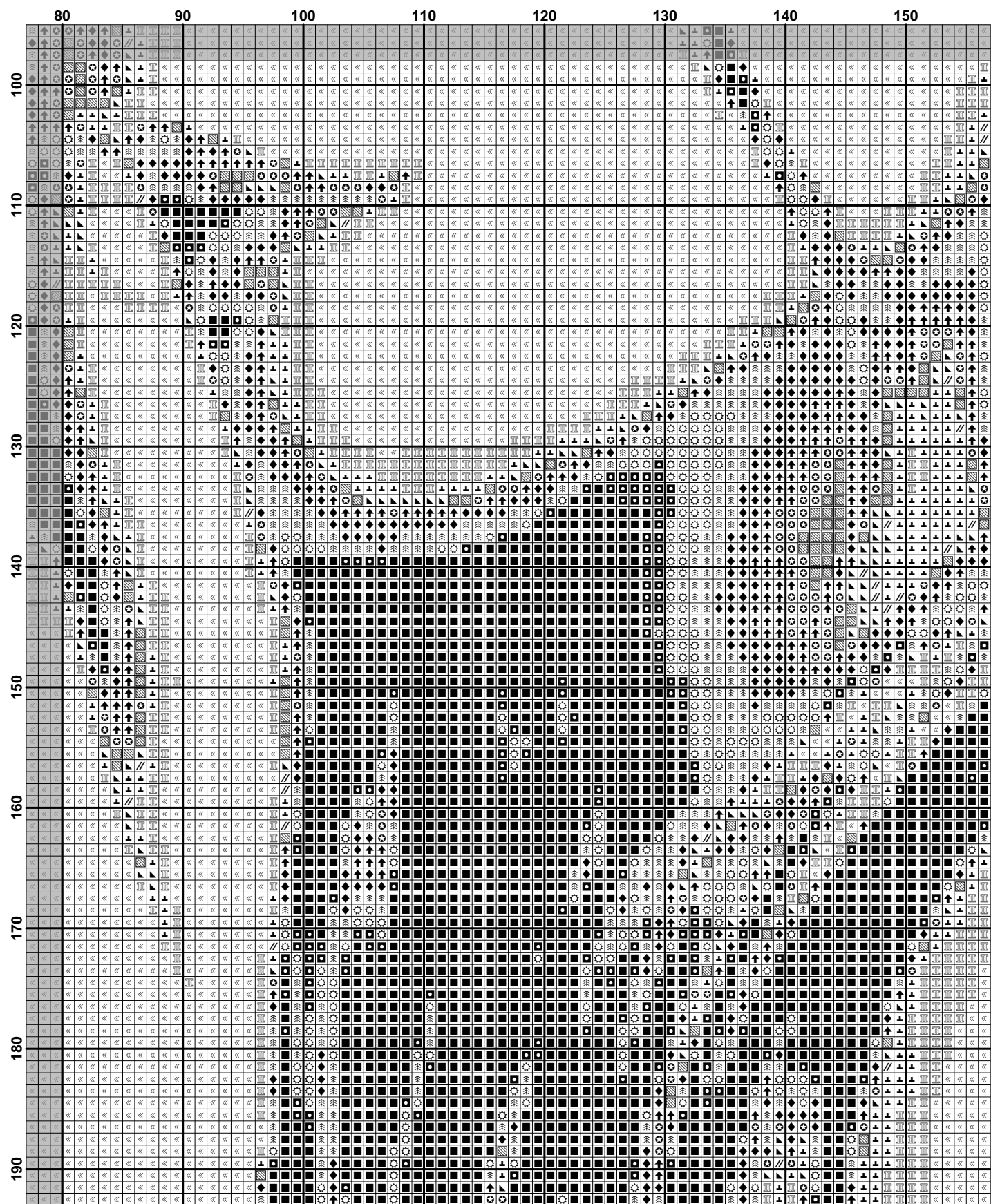


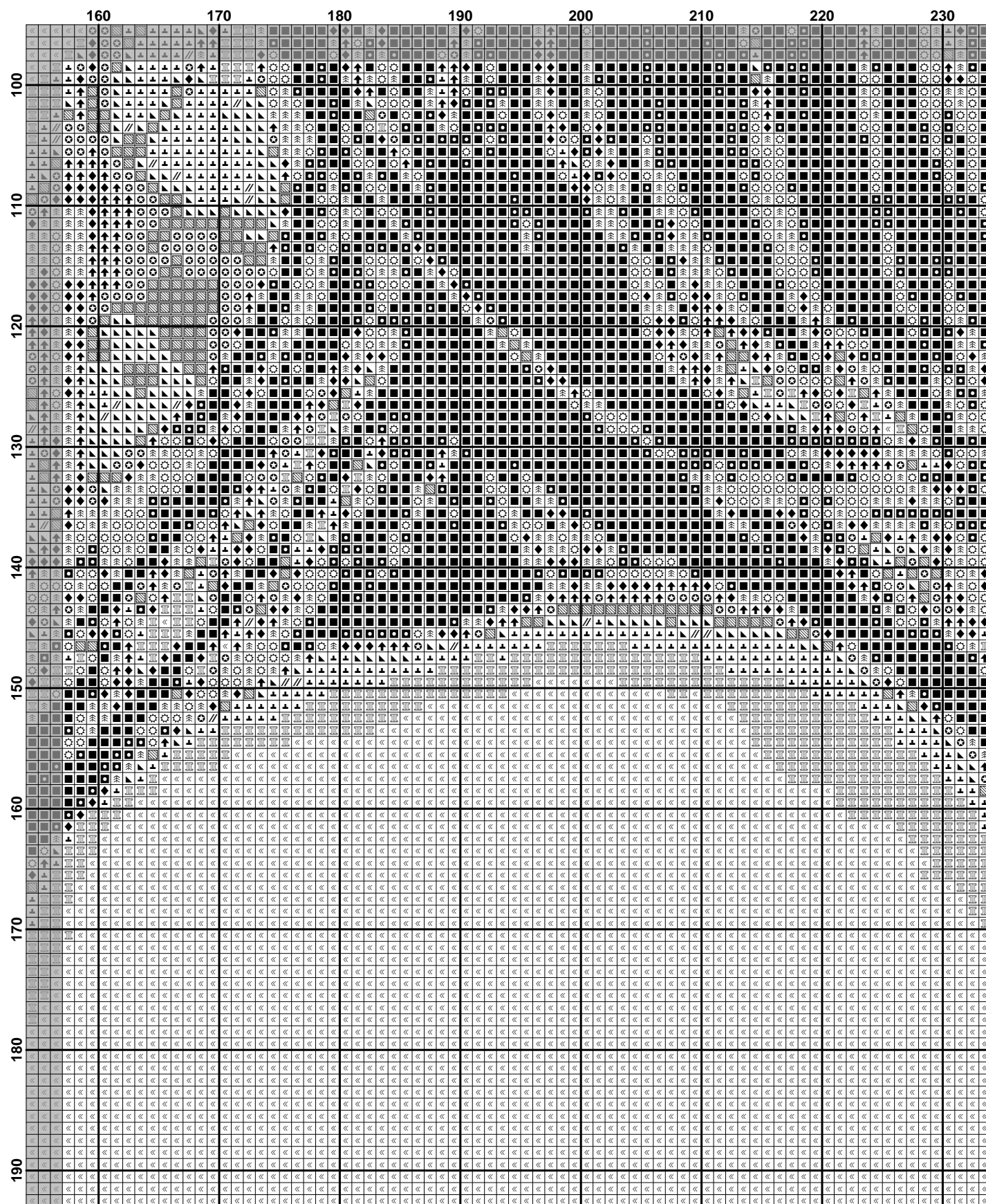


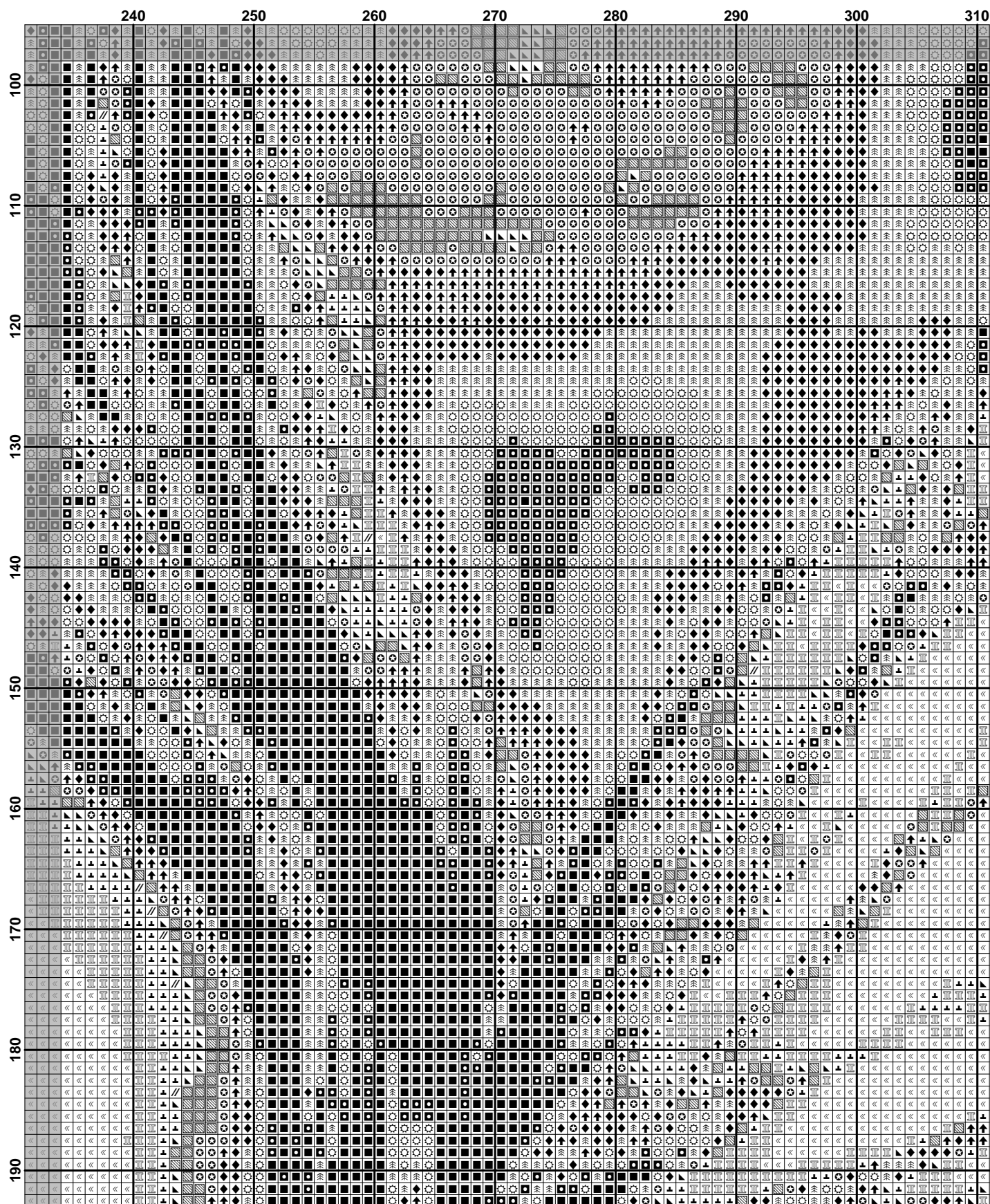


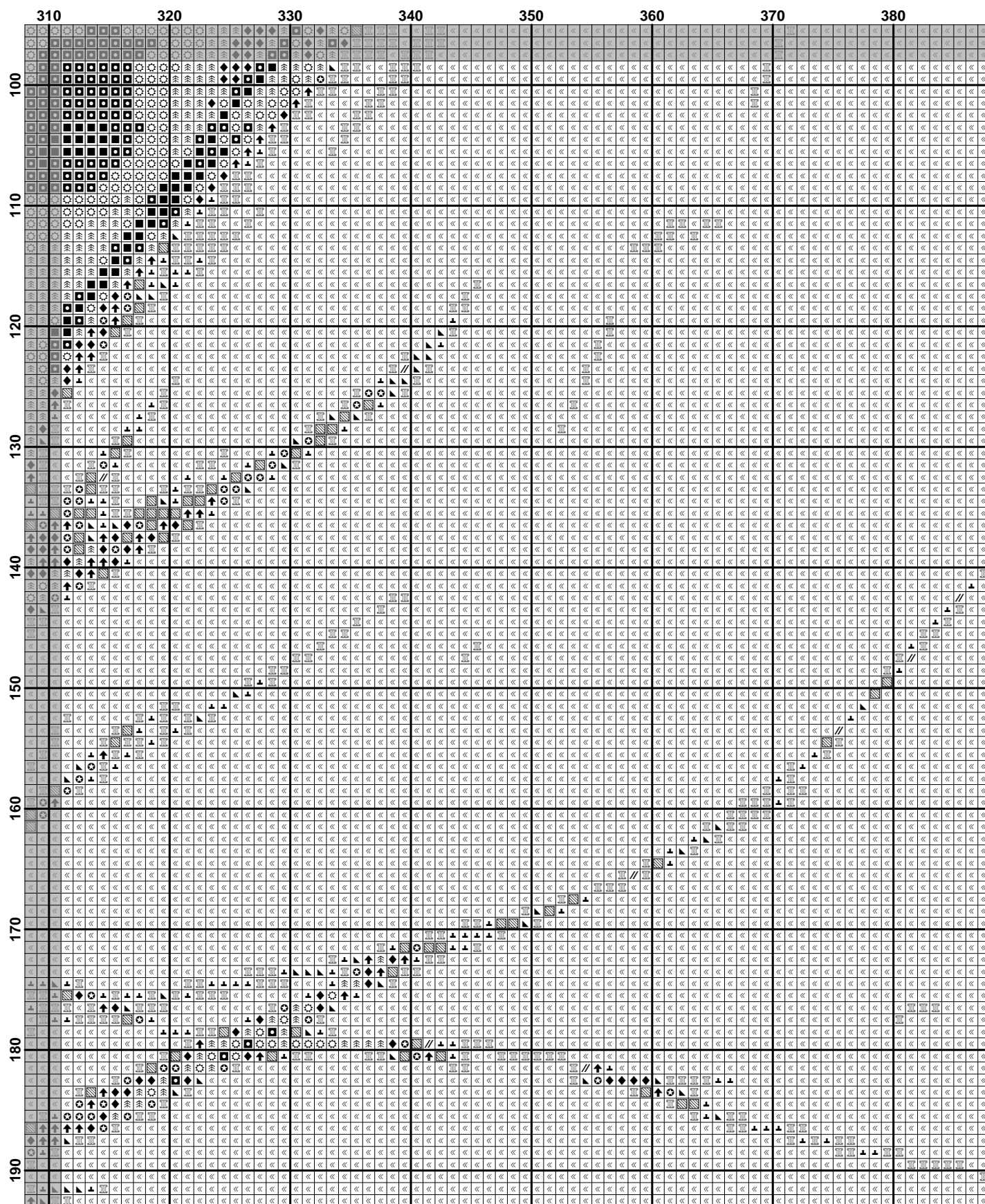




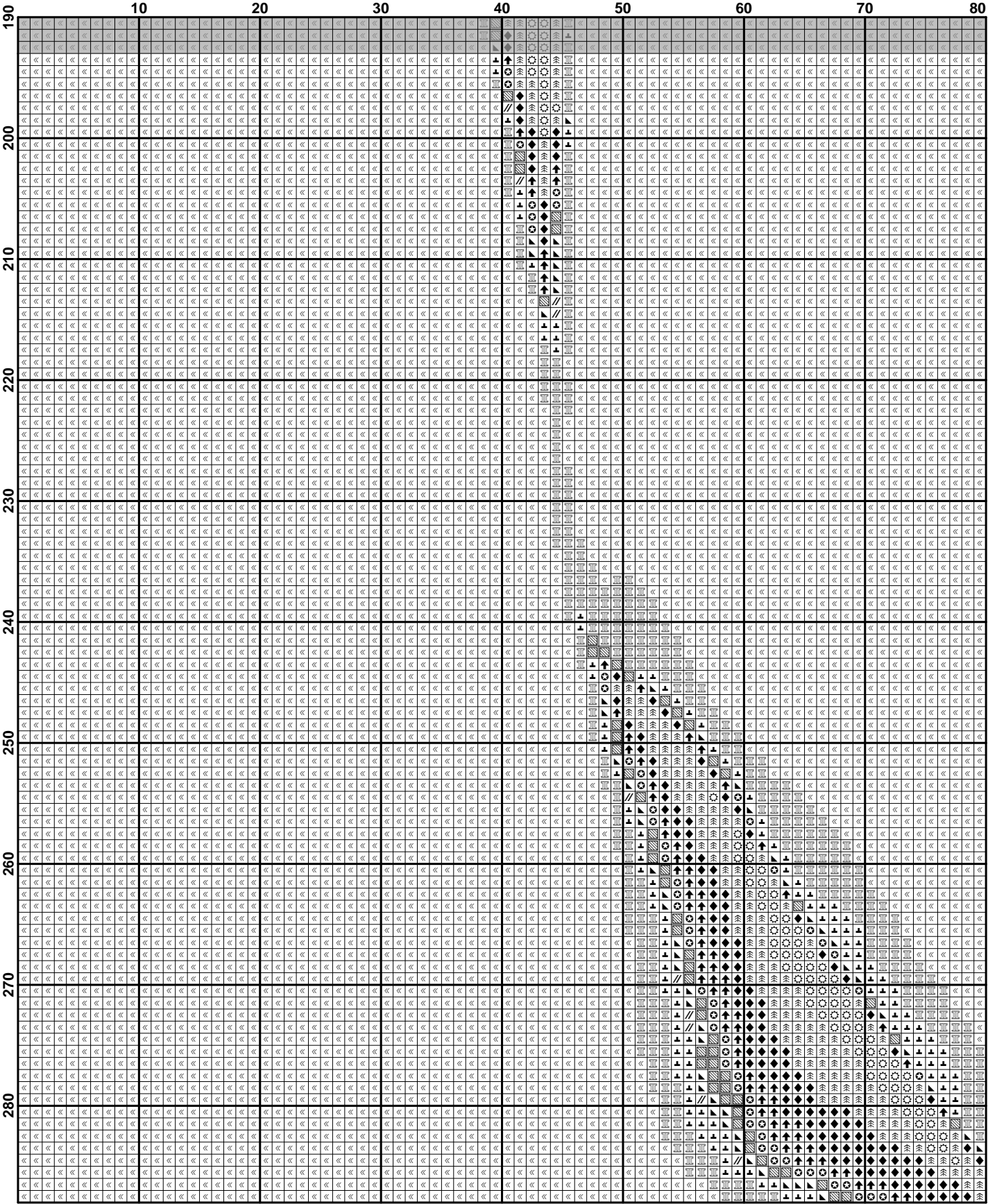


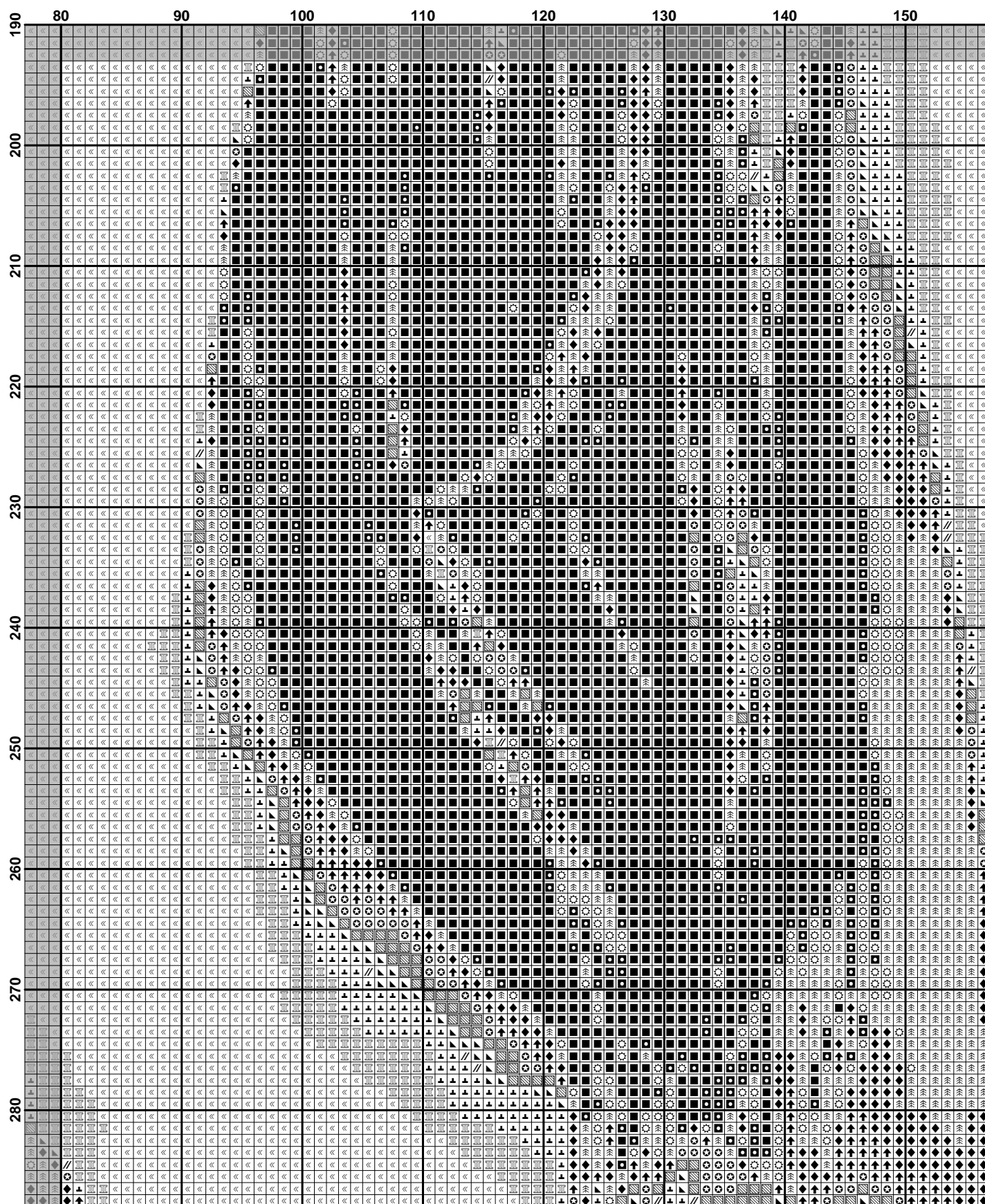






[illegible]





[illegible]

